



7 Series



Wertheim 7 Series

## Features

1. Control Handle
2. Handle On/Off Button
3. Handle Suction Control Buttons
4. Handle On/Off Button (Powerhead)
5. Rod
6. Dust Bag Cover Latch
7. Air Inlet
8. Accessory Cover Release Button
9. Dust Bag Indicator
10. Standby On/Off Button
11. Exhaust Filter Release Button
12. Digital Power Control Display
13. Cable Rewind Button
14. Powerhead
15. Powerhead Belt Window
16. Powerhead LED Lights
17. Rod Quick Release
18. 3-in-1 Cleaning Tool
19. Combination Floor Tool
20. Hard Floor Turbo Tool





## INTRODUCTION

Congratulations on the purchase of your new Wertheim 7 Series Vacuum Cleaner. There are many useful features built into your vacuum cleaner. We recommend that you carefully read this instruction manual for the best results.

### Specifications

Max power cleaner: 1300W (1500W with Powerhead)

Dust bag capacity: 2.5L

Weight: 11kg

Hose length: 1.8m

Power cable length: 8m

Rod and hose diameter: 35mm

Telescopic tube: Aluminum

# BEFORE YOU BEGIN

This cleaner must be operated in accordance with these instructions and used only for domestic household cleaning to remove DRY dirt and dust from household carpets, flooring, walls and fabrics. This cleaner is not fit to be used as an industrial cleaner and will void the manufacturer's warranty if used inappropriately.

Please read these instructions thoroughly. This will ensure you obtain full benefit from your new cleaner. Keep this Instruction Manual in a convenient and safe place for future reference.

## Important

Always switch the cleaner off and remove the power plug from the electricity supply before cleaning your appliance, when not in use, or attempting any maintenance task. The cleaner must only be connected to an AC power supply at the voltage shown on the rating plate. This cleaner should only be used for its intended purpose as described in these instructions.

## Precautionary Measures:



1. Do not operate the vacuum cleaner too close to heaters, radiators, and other hot surfaces.



2. Before inserting the power plug into the power supply, make sure your hands are dry.



3. Before turning on the vacuum cleaner, remove any large objects from the floor or cleaning surface in order to prevent damage to the filter.



4. When unplugging the power plug from the power socket, do not use the power cable, gently pull the power plug from the power socket.



5. Do not use the vacuum cleaner to pick up water or liquids.

# SAFETY INSTRUCTIONS

**IMPORTANT! Always switch off the cleaner and remove the power plug from the electricity power supply before cleaning your appliance, when not in use or attempting any maintenance task. The cleaner must only be connected to an AC power supply at the voltage shown on the rating label. This cleaner should only be used for its intended purpose as described in this instruction manual. Never operate the vacuum cleaner without filters.**

When using your vacuum cleaner, basic precautions should always be observed, including the following:

1. This appliance is not intended for use by persons (including children) with reduced physical, sensory or mental capabilities or lack of experience and knowledge, unless they have been given supervision or instruction concerning use of the appliance by a person responsible for their safety.
2. Children should be supervised to ensure that they do not play with the vacuum cleaner.
3. Keep ends of the hose, telescopic tube and other openings away from your face and body.
4. Do not operate the vacuum cleaner too close to heaters, radiators or other hot surfaces.
5. Do not use the appliance to pick up flammable items or combustible liquids (i.e. petrol, hot ashes, cigarettes, matches, explosive materials or anything burning) or use in areas where such substances or items may be present.
6. Do not use the appliance to pick up toxic materials (i.e. chlorine, bleach, ammonia).
7. Before vacuuming, remove any large objects from the floor or cleaning surface in order to prevent damage to the filter.
8. Always check the power cord before use. The power cord and the power plug should be in a good condition and must not be damaged. If the power supply cord is damaged or defective, it must be replaced by the manufacturer, its service agent or similarly qualified persons in order to avoid a hazard.
9. Do not extend the power cable beyond the yellow mark.
10. Do not pull or carry the appliance by the power cable, use the power cable as a handle or pull the power cable around edges or corners. Avoid running the appliance over the power cable.
11. Ensure the appliance is switched off before unplugging.
12. Do not unplug by pulling on the power cord. To unplug, grasp the power plug not the power cord and gently pull the power plug from the power socket. Use only Australian and New Zealand electrical safety approved extension cords.
13. Hold the power plug when rewinding the power cord. To prevent accidental injury do not allow the power plug to whip when rewinding.

14. Do not handle or operate the appliance with wet hands. Follow electrical safety precautions at all times.
15. To prevent electrical shock, do not immerse the appliance, power cord or power plug into water or any other liquids.
16. Do not use the machine to vacuum water or liquids, this vacuum is for dry household use only.
17. To prevent electrical shock, do not use the vacuum cleaner outdoors or on wet surfaces.
18. Extreme caution should be exercised when using the appliance on stairs.
19. Never clean the vacuum cleaner or any of the electrical parts, especially the electrical connections with water or liquid cleaners.
20. Do not attempt to change the attachments while the appliance is plugged into the mains power supply. First switch off and remove the power plug from mains power supply. Use only the manufacturer's recommended accessories.
21. Ensure the appliance is disconnected from the mains power supply before connecting the hose to the unit.
22. Do not operate or use the appliance without the dust bag and/or filters in place.
23. If the air inlet, floor head or the telescopic tube is blocked, switch off the cleaner straight away and disconnect the power plug from power supply. First clear the blocked object before attempting to start the cleaner again.
24. Do not leave the appliance unattended when it is connected to a mains power supply.
25. Before carrying out any maintenance service or cleaning the filters, always switch off the vacuum cleaner and disconnect the power plug from power supply.
26. Do not use the vacuum cleaner if it is damaged or breaks down. Check the electrical components regularly for defects.

If connection cables, electrical hoses, electrical contacts and electric tubes are damaged, have them replaced immediately.

27. Never attempt to make any modifications to the vacuum cleaner.
28. Always store the appliance indoors, in a cool, dry place.
29. Damage caused by improper use or by not observing the instructions in this manual will void the warranty.

### **Vacuum Cleaner with Powerhead**

1. The electric hose contains electrical connections;
  - Do not immerse in water.
  - The hose should be checked regularly and must not be used if damaged.
  - The vacuum cleaner handle contains electrical connections. The handle is not a serviceable part.
  - The vacuum cleaner rod contains electrical connections. The rod is not a serviceable part.
  - The vacuum cleaner powerhead contains electrical connections. The powerhead is not a serviceable part.
2. Use the powerhead only for vacuuming dust and dry substances in the home.
3. To avoid damage to the power cable never run over the power cable with the powerhead.
4. Never touch the brush roller while the vacuum cleaner is connected to the mains power supply.
5. To prevent unnecessary wear on the powerhead, keep the powerhead moving while in operation.
6. Keep hair, hands and feet away from the rotating brush while the powerhead is running.

# ASSEMBLING THE VACUUM CLEANER



**IMPORTANT!** Always remove the power plug from the power supply before fitting or removing accessories!



## 1. Flexible Hose

Fitting:

Insert the flexible hose into the air inlet of the vacuum. Press until it clicks into position.

Removing:

Press the two buttons and gently pull to release the flexible hose.



## 2. Handle

1. Gently insert the handle into the telescopic tube and push until it clicks into place.



2. Place the powerhead onto the floor and gently insert the telescopic tube into the powerhead. Push until it clicks into place.

**Note:** The powerhead has a quick release button to remove the rod for easy and convenient access. Simply press the Rod Quick Release to remove the rod from the powerhead.

# ACCESSORIES



## Powerhead

**WARNING!** Seek advice from carpet manufacturers before using the motorised powerhead on woollen or delicate carpets.

Whirlwind Power Pulse technology deeply cleans carpets by effectively lifting and removing deeply embedded dust and dirt.

**Note:** *Not recommended for use on hard floors.*

**Tip:** *The Powerhead Belt Window can be used to check the health of the powerhead belt or whether the agitator bar is rotating.*



## Hard Floor Turbo Tool

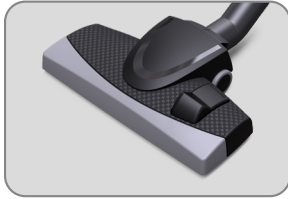
Specifically designed for removing dirt and debris from hard floors.

**Note:** *As a safety precaution, the Hard Floor Turbo Tool must be placed onto the floor for the roller brush to activate.*

When using the Powerhead & Hard Floor Turbo Tool:

1. Never run over the power cable.
2. Never touch the brush roller while the vacuum cleaner is connected to the mains power supply.
3. Keep hair, hands and feet away from the rotating brush while in operation.





### Combination Floor Tool

This multi purpose combination floor tool easily switches from a carpet cleaning tool to a hard floor tool.



### 3-in-1 Cleaning Tool

Combines a crevice tool, upholstery tool & dusting brush all in the one tool for convenient cleaning.

To use the 3-in-1 Cleaning Tool as an upholstery tool or as a dusting brush simply remove the crevice tool and insert the crevice tool into the opposite end of the tool you would like to use.



### 1. Upholstery Tool

For Vacuuming furniture and upholstery.



### 2. Crevice Tool

Eliminate dust from hard to reach places.



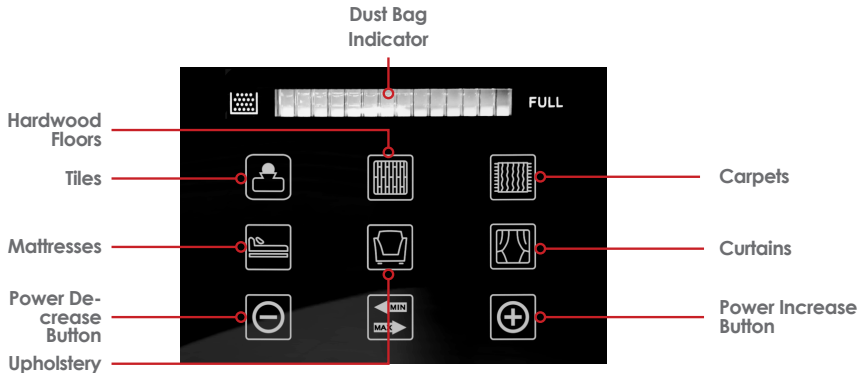
### 3. Dusting Brush

Ideal for cleaning blinds, bookshelves and lampshades.

# DIGITAL POWER CONTROL

The suction power can be regulated by using the Digital Power Control to achieve optimal cleaning results. To change the suction power to suit a particular cleaning task, press the Power Increase Button to increase the suction power, and to reduce the suction power, press the Power Decrease Button.

The Dust Bag Indicator will continually flash red to indicate that the dust bag requires replacement or to indicate that there is a blockage.



# INSTRUCTIONS FOR USE

## Using the Cable Rewind Button and Standby On/Off Button



### Standby On/Off Button

1. Unwind a sufficient length of cable. The yellow mark on the power cable shows the ideal cable length.  
**DO NOT extend the cable beyond the red mark.**
2. Insert the power plug into the power socket.
3. Press the Standby On/Off button to put the vacuum into Standby Mode.
4. To switch On the cleaner either:
  - a. Press the On/Off Button on the Control Handle.
  - b. Alternatively, press the Power Decrease or Power Increase buttons on the Digital Power Control panel.




### Rewind

1. Press the On/Off button to switch off the vacuum.
2. Unplug the cable from the power socket.
3. To rewind the power cable, press the rewind button with one hand and guide the cable with the other hand to ensure that the power cable does not whip.

**Note: Do not unplug by pulling on the power cord. To unplug, grasp the power plug not the power cord and gently pull the power plug from the power socket.**

## WIRELESS CONTROL HANDLE



1. To switch on or off the vacuum cleaner press the  button.



2. To manually increase or decrease the suction power level, press the + or – buttons.



3. To switch on the powerhead, slide the On/Off Button (Powerhead) button forward. To switch off the powerhead, slide the On/Off Button (Powerhead) button backwards.

## SYNCHRONISING THE WIRELESS CONTROL HANDLE

**IMPORTANT!** If the cleaner is unresponsive after placing the cleaner into standby mode and switching on the cleaner via the Control Handle, please follow the below steps to synchronise the handle to the vacuum.



1. Press the Standby On/Off Button. The cleaner will be in standby mode.



2. Simultaneously press and hold for 20 seconds the Power Decrease and Power Increase buttons on the Digital Power Control panel. If performed correctly, the icons on the Digital Power Control panel will blink and the Dust Bag Indicator light will be switched off.



3. Press the "+" button on the Wireless Control Handle to synchronise the Wireless Control Handle to the vacuum. If performed correctly the Dust Bag Indicator light will blink and the icons lights on the Digital Power Control panel will turn off.

# MAINTENANCE

## Vacuum Cleaner Storage

When not in use, ensure that the cleaner is disconnected from the mains power supply and that the cable is fully retracted. The combination floor tool can be stored in the floor tool holders. Other floor tools must be stored separately.

## Replacing the Dust Bag

**WARNING!** Ensure that the cleaner is disconnected from the power supply when installing or removing the dust bag.

**Note:** Only use the dust bag supplied or recommend by the manufacturer to avoid causing damage to the machine and voiding the warranty.



Always operate the cleaner with the dust bag installed. If you forget to install the dust bag or the dust bag is installed incorrectly, the dust bag cover may not close completely.

1. Remove the hose from the air inlet.
2. Open the cover by pulling on the Dust Bag Cover Latch.
3. To stop dust and debris from escaping when removing the dust bag from the machine, firmly hold the dust bag in the dust bag holder and gently pull the dust bag seal.
4. Refit a new dust bag by inserting the dust bag collar into the dust bag bracket. Ensure that the arrow on the dust bag collar is facing downwards when being inserted into the dust bag bracket.

**Note:** The genuine Wertheim 7 Series dust bag has been designed with a seal to prevent dust and debris from escaping when the dust bag is removed from the cleaner.

5. Gently close the cover, you will hear a 'click' when closed properly.

**Note: Please ensure that the dust bag is fully inserted into the dust bag bracket before closing the cover to avoid dust leaking from the dust bag.**

## Pre-Motor Filter Replacement

**WARNING! Ensure the cleaner is disconnected from the power supply before performing any maintenance procedures.**



The pre-motor filter should be replaced every six months or when it becomes visibly dirty.

Always operate the cleaner with clean filters; otherwise, there may be a reduction in the suction power or motor damage may result.

**Note: Do not use a washing machine to wash the filter or a hair drier to dry the filter.**

1. Pull out the filter bracket assembly.
2. Replace with a new filter.

## Exhaust HEPA Filter Replacement

**WARNING! Ensure that the cleaner is disconnected from the power supply before performing any maintenance procedures.**

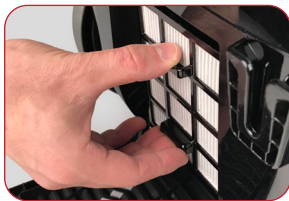
The Exhaust HEPA filter is installed behind the air outlet grill. This filter is washable.

When dust or dirt is visible on the surface of the HEPA filter, the filter should be replaced or washed with warm water to maintain optimal performance.

It is recommended to replace the HEPA filter every 6 months or when it becomes visibly dirty. This may vary depending on frequency of use. Please ensure all filters have been correctly installed into the machine before use.



1. Press the Exhaust Filter Release Button to access the Exhaust HEPA Filter.



2. Remove the filter by pulling on the filter tabs as shown.



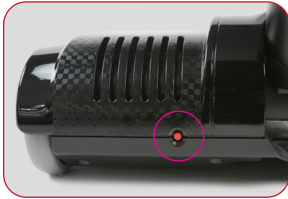
## Cleaning the Motorised Powerhead

**WARNING!** Ensure that the cleaner is disconnected from the power supply and the powerhead is disconnected from the rod before performing any maintenance procedures.



The agitator bar must be free of debris for effective cleaning and for maximum suction.

1. Disconnect the motorised powerhead from the vacuum rod and turn it over to inspect the agitator bar.
2. If a build-up of debris is wound around the agitator bar, remove by carefully cutting with scissors. Avoid damaging or cutting the bristles.

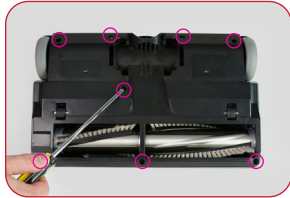


**The powerhead has an overload protection feature to protect the motor in the powerhead. The powerhead will turn off if the powerhead is clogged. To reset the powerhead once it has automatically turned off, clean the rotating brush and then press the Overload Protection button to reset the powerhead.**

## Replacing the Powerhead Agitator Bar & Drive Belt



**WARNING!** Ensure that the cleaner is disconnected from the power supply and the powerhead is disconnected from the rod before performing any maintenance procedures.



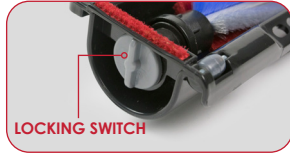
Depending on frequency of use, the powerhead agitator bar & drive belt will occasionally require changing.



1. Disconnect the motorised powerhead from the vacuum rod and turn it over. With a Phillips head screwdriver unscrew the eight screws, as shown.
2. Remove the powerhead cover to access the agitator bar and belt.
3. Lift the side of the agitator bar with the belt attached and slide the belt off the end cap. The agitator bar can now be removed for cleaning or replacement.
4. Slide the belt off the drive shaft to remove the belt. If the belt is broken, remove all the broken pieces. To replace the belt, install the new belt over the drive shaft first and then the end cap. Make sure the lettering on the belt is outward facing.
5. Reinstall the agitator bar securely back into place. Then install the powerhead cover and screws.

## Cleaning the Hard Floor Turbo Tool

**WARNING!** Ensure that the cleaner is disconnected from the power supply before performing any maintenance procedures.



The rotating brush must be free of debris for effective cleaning and for maximum suction.

1. Disconnect the Hard Floor Turbo Tool from the vacuum rod and turn it over to inspect the rotating brush.
2. If a build-up of debris is wound around the rotating brush, remove by carefully cutting with scissors. Avoid damaging or cutting the bristles.

To replace or clean the rotating brush, turn the locking switch. The rotating brush can now be replaced or cleaned.

## Changing the Remote Control Battery

**WARNING!** Ensure that the cleaner is disconnected from the power supply before performing any maintenance procedures.



1. Unscrew the battery holder with a screwdriver. The battery holder can now be pulled out from the handle.
2. Replace the battery and reinsert the battery into the handle. Ensure the battery holder is screwed securely with a screwdriver.

**WARNING - Keep battery out of reach of children and ensure the battery holder is secure. If you suspect your child has swallowed or inserted a button battery immediately call the 24-hour Poisons Information Centre on 13 11 26 for fast, expert advice.**

# TROUBLESHOOTING

Service problems that appear to be major can often be solved easily. You can be your own troubleshooter by reviewing this guide. All other servicing should be performed by an authorised service agent or qualified technician.

Contact Wertheim Customer Service for your nearest authorised service agent on 1800 815 270.

<b>Fault</b>	<b>Solutions</b>
The cleaner will not turn on.	Check that the power cable is inserted securely; remove from the power supply and then reinsert into the power supply.  Refer to pages 11 & 13 of the manual.
The vacuum performance is deteriorating or the Dust Bag Indicator is flashing.	Switch off the machine.  Check the appliance to ensure there are no blockages.  Clear any blockages that may be found.  Check that the pre-motor filter is not dusty; clean rubbish or replace the pre-motor filter and Exhaust HEPA filter.  Check whether the dust bag is full; replace the dust bag if it is full.
The cleaner makes an abnormal sound when switched on.	Turn off the cleaner immediately.  Check the appliance to ensure there are no blockages.  Clear any blockages that may be found.  Check that the powerhead is installed securely.

<b>Fault</b>	<b>Solutions</b>
Powerhead not working.	<p>Check that the on/off button is in the "ON" position.</p> <p>Check the installation of the powerhead is correct.</p> <p>Remove the power brush and clean any big objects trapped around the roller bar.</p> <p>Check there is no object pressing the top of the powerhead.</p> <p>Check through the powerhead belt window that the powerhead belt is not broken.</p> <p>Clean the rotating brush and then press the Overload Protection button to reset the powerhead.</p>

# SPARE PARTS

<b>Powerhead</b>	11400172
<b>3-in-1 Cleaning Tool</b>	31155286
<b>Agitator Bar</b>	31155290
<b>Combination Floor Tool</b>	31155288
<b>Filter Set</b>	32201461
<b>Hard Floor Turbo Tool</b>	31155311
<b>Dust Bags - 4pk</b>	32440443



This warranty on your cleaner commences from the original date of purchase and is not transferable; please retain your original proof of purchase for any warranty claims. This warranty is valid only in the country where the cleaner is purchased.

The cleaner must be operated in accordance with these instructions and used only for domestic household cleaning to remove DRY dirt and dust from household carpets, flooring and fabrics. This cleaner is not fit to be used as an industrial cleaner, and is not designed for the collection of vitreous building material including particle board, construction products and similar products such as wood/fibres, cement, fillers, fibre glass etc or excessive or frequent sand. The infrequent pick-up of these materials in these circumstances may be harmful to your cleaner and may void the manufacturer's warranty.

Accessories and consumables including dust bags and filters, unless defective in manufacture, are not subject to this warranty. In order to prolong the life of accessories and consumables, regular care and maintenance is recommended.

When properly used and cared for, your cleaner will render excellent service; refer to the instruction manual for further details, as misuse or failure to follow the instructions makes this warranty void.

The decision to repair or replace the cleaner is at the sole discretion of Electrical Home-Aids Pty Ltd.

Electrical Home-Aids Pty Ltd is unable to accept responsibility under this warranty for any repair work not carried out by an authorised Electrical Home-Aids Service Agent or from the use of non-genuine parts. If any part is no longer available or manufactured, Electrical Home-Aids Pty Ltd will replace it with a genuine functional replacement part. This warranty does not apply to the cost of replacing any parts of the product due to normal wear and tear, alterations, improper installation, physical abuse, misuse or accidental damage. Any transportation costs involved in the repair of defective parts shall be borne by the claimant.

If proof of purchase cannot be provided at the time of a warranty claim, any work carried out on the cleaner is chargeable. The repair or replacement of the cleaner under this warranty does not extend the original period of warranty.

The benefits conferred by this warranty are in addition to all other rights and remedies in respect of the product as outlined under the Trade Practises Act and other State and Territory laws.

"Our goods come with guarantees that cannot be excluded in the Australian Consumer Law. You are entitled to a replacement or refund for a major failure and for compensation for any other reasonably foreseeable loss or damage. You are also entitled to have the goods repaired or replaced if the goods fail to be of acceptable quality and the failure does not amount to a major failure."

[www.wertheimcleaning.com.au](http://www.wertheimcleaning.com.au)  
[www.wertheim.co.nz](http://www.wertheim.co.nz)



**Electrical Home-Aids Pty. Limited**

ABN: 62 007 539 577

Brandon Office Park, Building 3, First Floor,  
530-540 Springvale Road,  
Glen Waverley, Victoria, 3150

 [wertheimcleaning.com.au](http://wertheimcleaning.com.au)  
[wertheim.co.nz](http://wertheim.co.nz)

 [enquiries@wertheim.net.au](mailto:enquiries@wertheim.net.au)