



QUALITY CLEANING SOLUTIONS



IDEAL FOR:

- Restaurants
- Cafes
- Motels & Hotels
- School

A-031B / CB15

**WET & DRY
VACUUM CLEANER**



IMPORTANT



Always switch off the cleaner and remove the plug from the electricity power supply before cleaning your appliance, when not in use. The cleaner must only be connected to an AC power supply at the voltage shown on the rating label. This cleaner should only be used for its intended purpose as described in this instruction manual.

Never operate the vacuum cleaner without filters.

SAFETY PRECAUTIONS AND WARNING:

WHEN USING YOUR VACUUM CLEANER, BASIC PRECAUTIONS SHOULD ALWAYS BE OBSERVED, INCLUDING THE FOLLOWING;

1. This appliance is not intended for use by persons (including children) with reduced physical, sensory or mental capabilities or lack of experience and knowledge, unless they have been given supervision or instruction concerning use of the appliance by a person responsible for their safety.
2. Children should be supervised to ensure that they do not play with the appliance.
3. To prevent electrical shock, do not immerse the top cover of the appliance, power cord or power plug into water or other liquids.
4. To prevent electrical shock, do not use the vacuum cleaner outdoors.
5. Always check the power cord before use, the power cord and the plug should be in a good condition and must not be damaged. If the power supply cord is damaged or defective, it must be replaced by the manufacturer, its service agent or similarly qualified persons in order to avoid a hazard.
6. Do not unplug by pulling on the power cord. To unplug, grasp the plug not the power cord. Use only Australian and New Zealand electrical safety approved extension cords.
7. Do not pull or carry the appliance by the power cable, use the power cable as a handle or pull the power cable around shaft edges or corners. Avoid running the appliance over the power cable.
8. Ensure the appliance is switched off before unplugging.
9. Do not handle or operate the appliance with wet hands and follow electrical safety precautions at all times.
10. Extreme caution should be exercised when using the appliance on stairs.
11. Do not attempt to change the attachments while the appliance is plugged in to Mains power supply. Switch off and remove plug from Mains power supply. Use only manufacturer's recommended accessories.
12. Do not operate the vacuum cleaner too close to the heaters, radiators and other hot surfaces.
13. Do not use the appliance to pick up flammable items or combustible liquids (i.e. gasoline, hot ashes cigarettes, matches, explosive materials or anything burning) or use in areas where such substances and items may be present.
14. Do not use the appliance to pick up toxic materials (i.e. chlorine bleach, ammonia).
15. Ensure the appliance is disconnected from the Mains power supply before connecting the hose to the unit.
16. Before vacuuming, remove any large or shaft objects from the floor or cleaning surface in order to prevent damage to the filter.

17. If the air inlet, floor head or the telescopic tube is blocked, switch off the cleaner straight away and remove from the Mains power. First clear the blocked object before attempting to start the cleaner vacuum again.
18. Do not leave the appliance unattended when it is connected to a Mains power supply.
19. Before carry out any maintenance service or cleaning the filters, always switch off the vacuum cleaner and disconnect the plug from power supply
20. Keep ends of the hose, telescopic tube and other openings away from your face and body.
21. Do not use the vacuum cleaner if it is damaged or breaks down. Check the electrical regularly for defects. If connection cables, electrical hoses, electrical contacts and electric tubes are damaged, have them replace immediately.
22. Never clean any of the electrical parts, especially the electrical connections with water or liquid cleaners.
23. Never attempt to make any modifications electrically to the vacuum cleaner.
24. Always store the appliance indoors in a cool and dry place.
25. For indoors and domestic use only
26. Damage caused by improper use or by not observing the instructions in this manual will void warranty.

BEFORE YOU BEGIN



1. **Do not** operate the vacuum cleaner too close to heaters, radiators, or other hot surfaces.



2. Before inserting the plug into the wall, make sure your hand is dry.



3. Before turning on the vacuum cleaner, remove any large or sharp objects from the floor or cleaning surface in order to prevent damage to the filter.



4. When you want to pull the plug from the wall, **do not** use the power cable, gently pull the plug from the power socket.

5. If the hose inlet or telescopic chrome tube are blocked, you should switch off the cleaner straight away and remove from mains power. Clear the blockage before attempting to start the vacuum cleaner again.

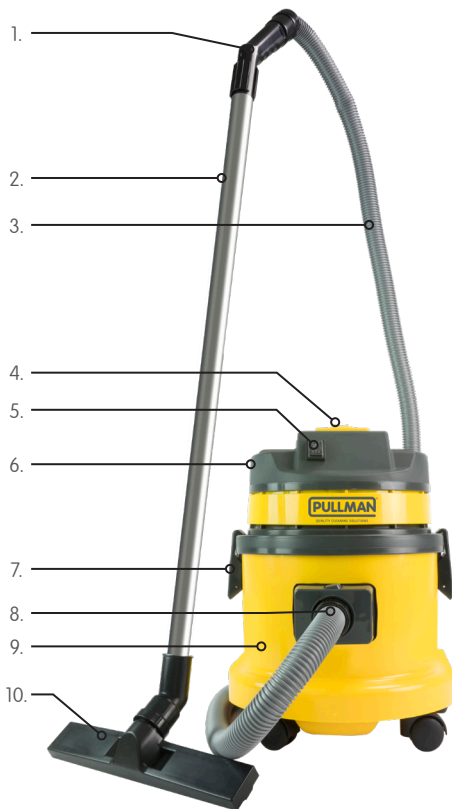
This machine is equipped with a cord and plug. In the event that either of these parts get damaged, it must be repaired by a qualified technician.

KNOW YOUR PRODUCT

1. Handle
2. 2 Piece Metal Tube
3. Hose
4. Lid Handle
5. On/Off Switch
6. Lid
7. Latches
8. Hose Inlet
9. Tank
10. Wet Pick Up Floor Tool
11. Combination Floor Tool
12. Dusting Brush
13. Crevice Tool
14. Upholstery Nozzle

Technical Information

Model: A-031B / CB15
220-240V~ 50Hz
1000W



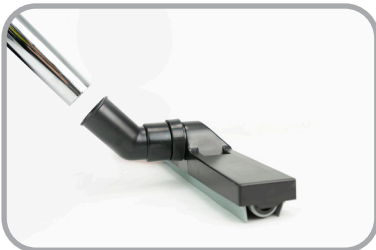
ASSEMBLY



1. Connect the 2-piece metal tube together.



2. Connect the handle on the hose to the tube.



3. Connect the tube to the desired cleaning accessory.



4. Connect the hose to the machine inlet.

ACCESSORIES



Combination Floor Tool

The Combination Floor Tool is ideal for vacuuming hard floors and carpets.



Wet Pick-up Floor Tool

The wet pick-up tool is ideal for wet applications.



Fitting dusting brush and crevice tool

To fit the accessories to the 2 piece metal tube, gently insert the tube into the top of the dusting brush or crevice tool.

Crevice Tool

Dusting Brush

Upholstery Nozzle

Dusting Brush – ideal for cleaning furniture, curtains and upholstery

Crevice Tool – ideal for cleaning in tight spaces

Upholstery Nozzle – For vacuuming furniture and upholstery.

OPERATION

IMPORTANT: MAKE SURE SWITCH IS IN O (OFF) POSITION, AND DISCONNECT THE CLEANER FROM MAINS POWER SUPPLY BEFORE CHANGING ACCESSORIES OR TO EMPTY THE CLEANER.

Dry Vacuum Cleaning



1. Release the latches to remove the canister lid.



2. Ensure the cloth filter bag is always installed before dry use.



3. Turn the switch of the vacuum cleaner to position "I" to operate the vacuum cleaner.
4. After cleaning, turn switch to "O" position to turn off. Empty the dust tank or dust bag when it's full or after each use.
5. The cloth filter also needs to be cleaned accordingly.

OPERATION

Wet Vacuum Cleaning mode



1. Ensure the cloth filter is removed before the cleaner is used.



2. Turn the switch of the vacuum cleaner to position "I" to operate the vacuum cleaner.

IMPORTANT: EMPTY THE TANK AFTER EACH USE.

MAINTENANCE



ATTENTION: DISCONNECT FROM MAINS POWER SUPPLY BEFORE DOING ANY MAINTENANCE WORK. IF PROPER CARE IS TAKEN TO MAINTAIN YOUR CLEANER, MOTOR MAINTENANCE IS UNNECESSARY.

HOWEVER WE RECOMMEND THAT YOUR CLEANER IS SERVICED ONCE A YEAR.



1. Release the latches to remove the canister lid.
2. Remove the cloth filter.
3. The cloth filter bag can be washed under luke warm water.
4. Dry by airing for at least 24 hours.

IT IS RECOMMENDED THAT THE FILTER BE CHANGED EVERY 6 MONTHS TO MAINTAIN GOOD AIR FLOW.



SPECIFICATIONS

Watts: 1000W

Capacity: 15L (A031B / CB15)

Power Cable Length: 7m

Net Weight: 8.5Kg (A031B); 10.75Kg (CB15)

TROUBLESHOOTING

TROUBLE	POSSIBLE CAUSE	REMEDY
Suction weakens or cleaner runs hot	Clogged filter	Brush dirt from filter. If condition continues, change filter.
	Air leak	Check all fittings for tight fit (floor tool, hoses, etc.). Check that tank cover is sealed properly.
	Obstruction in hose or floor tool	Check floor tool, hose, etc. for obstructions, and remove if present.

CUSTOMER CARE

Please contact Godfreys Commercial Customer Support on 131 929 to find your local spare parts provider.

A031B:

PRODUCT NUMBER	PRODUCT DESCRIPTION
33500314	Small Castor Wheels
33200523	On/Off Switch
31110013	Combination Floor Tool
31110127	Hard Floor Squeegee Tool
31220268	Hose Assembly
31300393	Chrome Tube
31130062	Dusting Brush
31120071	Crevice Tool
33701473	Float Cage
33400148	Cloth Filter
31140059	Upholstery Tool
33701474	Latch
32440536	Dust bag CU904S 5pk

CB15:

PRODUCT NUMBER	PRODUCT DESCRIPTION
31110127	36mm Wet Floor Tool
31110013	Complete Floor Tool
31220268	36mm Hose
31300393	36mm Rod
33400148	Cloth Filter
32440536	Dust bag CU904S 5pk

Conditions of warranty



Your Pullman cleaner, in the case of domestic use, has a one year warranty against product defects and failures when the product is used in accordance with the terms and conditions of this warranty statement.

This warranty is provided by Future Innovation Holdings Pty Ltd Trading as Godfreys Commercial ABN 98 677 632 021. This warranty commences from the original date of purchase and is not transferable. You are required to retain your original proof of purchase for any claims under this warranty. This warranty is valid only in the country where the cleaner is purchased.

Your Pullman cleaner must be operated in accordance with these instructions and used only for domestic household cleaning to remove dry dirt and dust from household carpets, flooring and fabrics. Your Pullman cleaner is not fit to be used as an industrial cleaner, and is not designed for the collection of vitreous building material including particle board, construction products and similar products such as wood/ fibres, cement, fillers, fibre glass etc or excessive or frequent sand. The infrequent pick-up of these materials may be harmful to your cleaner and will void this warranty.

Accessories and consumables including dust bags and filters, unless defective in manufacture, are not subject to this warranty. In order to prolong the life of accessories and consumables, regular care and maintenance is recommended.

Refer to the instruction manual for further regarding the use and care of your Pullman cleaner, as misuse or failure to follow the instructions voids this warranty.

In the event of service or advice being needed, or if you would like to make a claim under this warranty, please immediately stop using the Pullman cleaner and contact Godfreys Commercial, 2 Drake Boulevard Altona, VIC 3018 on 131 929, Monday-Friday 9am-5pm AEST or commercialsupport@godfreys.com.au.

The decision to repair or replace the cleaner is at the discretion of Godfreys Commercial depending on the circumstances and requirements of any applicable law. If Godfreys Commercial decide to repair or replace your Pullman cleaner, it will do so at its own cost. Any transportation costs involved in a claim under this warranty shall be borne by the claimant.

Godfreys Commercial is unable to accept responsibility under this warranty for any repair work not carried out by an authorised Service Agent, or any defect arising from or in connection with the use of non-genuine parts. If any part is no longer available or manufactured, Godfreys Commercial will replace it with a genuine functional replacement part. This warranty does not apply to the cost of replacing any parts of the Pullman cleaner due to normal wear and tear, alterations, improper installation, physical abuse, misuse or accidental damage.

If proof of purchase cannot be provided at the time of a warranty claim or service, any work carried out on the Pullman cleaner will be at claimant's cost.

The repair of the Pullman cleaner under this warranty does not extend the original period of warranty. If your Pullman cleaner is replaced under this warranty, the replacement will be covered by this warranty for the remainder of the original warranty period. However, you may still have statutory rights after this time.

The benefits conferred by this warranty are in addition to all other rights and remedies in respect of the product as outlined under the Competition and Consumer Act 2010 (Cth) and other State and Territory laws.

Our goods come with guarantees that cannot be excluded under the Australian Consumer Law. You are entitled to a replacement or refund for a major failure and compensation for any other reasonably foreseeable loss or damage. You are also entitled to have the goods repaired or replaced if the goods fail to be of acceptable quality and the failure does not amount to a major failure.



Future Innovation Holdings Pty. Ltd. trading as Godfreys Commercial

ABN: 98 677 632 021

2 Drake Boulevard Altona, Victoria 3018

Customer Support:

131 929

www.godfreyscommercial.com.au

commercialsupport@godfreys.com.au

Pullman® is a registered trademark.