

**PULLMAN**  
**ADVANCE**

PROFESSIONAL COMMERCIAL CLEANING

**32**  
**mm**

## COMMANDER 900

MOST COMFORTABLE BACKPACK

- European Made DOMEL High Efficiency Motor
- Anti-Vibration Absorbers(AVA) (Patented)
- Professional Grade HEPA 13 Exhaust Filter
- Large 5.5L Dust Bin & Patented Vortex Filter Chamber
- Blower Port(Patented)
- Flexible Cord Restraint(Patented)
- Soft Rubber Bumper

**Engineered & Designed**  
Specifically for Commercial Cleaners





# Commander 900

Congratulations on the purchase of your new Pullman Advance Backpack vacuum cleaner Commander 900. Your Pullman Advance Backpack has been manufactured to the highest quality and performance standards. We recommend that you read these instructions carefully to ensure peak cleaning performance and to extend the life of the backpack.

## Features:

1. Flexible hose
2. Dust bin lid latch
3. Suction Relief Valve
4. Hose handle holder
5. Gulper Advance Floor Tool with Patented Ball Bearings
6. On/Off button & variable Suction control
7. Blower port
8. Exhaust filter grill
9. Powerhead outlet
10. Upper back frame & height adjustment
11. Carry handle
12. Shoulder straps
13. Anti-Vibration Absorbers(AVA) Patented
14. Cable restraint

## Accessories:

15. Pre-Motor sponge filter (not shown)
16. Motor exhaust HEPA filter (not shown)
17. 2-Piece aluminium rod
18. Paper bags 5pcs
19. Cloth filter bag
20. Long Crevice Tool
21. Patented Vortex HEPA Filter Chamber

## Specifications:

**Capacity:** 5.5L

**Motor:** Flow Through Domel Motor

**Air Watt:**

355Watt (Turbo); 235Watt (Eco)

**Air Flow:**

51L/s (Turbo); 44L/s (Eco)

**Suction Power:** 23.6Kpa

**Input Power:**

1250W - European Motor High Efficiency

**Sound Level at Ear Level:**

72.5dBa (Turbo);

68.6dBa (Eco)

**Filtration:**

Paper bag; Cloth bag; Patented Vortex HEPA Filter Chamber; Motor inlet mesh filter; HEPA 13 exhaust filter.

**Cord Length:** 18m

**Rod:** 32mm system 2 pcs aluminium rods

**Hose:** 1.2m(with strain relief on both ends)

**Floor Tool:** Ball Bearings Gulper Advance

**Floor Tool Accessories:** Long Crevice Tool

**Barrel Dimension:**

250mm(depth) x 230mm(diameter)

**Net Weight:** 5.4Kg

**Please contact Godfreys Commercial Customer Service on 131 929 to find your local spare parts provider.**

# FEATURES

<b>Large 5.5L Dust Bin &amp; Patented Vortex Filter Chamber</b>	The patented vortex filter chamber design removes the need for a filter cone, thus providing full use of the dust storage capacity, perfect for cleaning large areas efficiently.
<b>Blower Port (Patented)</b>	This handy blower port at the front of your Commander 900 easily transforms your backpack vacuum into a blower.
<b>Flexible Cord Restraint</b>	Prevents and protects the extension power cord from disconnecting.
<b>European Made DOMEL High Efficiency Motor</b>	The European made high efficiency motor is superior in that it is significantly quieter than other leading brands. With two operating modes, ECO and TURBO, it can operate at optimum levels regardless of the floor type. Never compromising performance or suction, the high efficiency motor out performs other leading brands, picking up more embedded dirt, plus the high efficiency flow from the motor uses less energy than other brands.
<b>Anti-Vibration Absorbers</b>	(AVA) (Patented) The world's ONLY backpack with patented Anti-Vibration Absorbers (AVA) which eliminate the transfer of motor vibrations through the harness and to your back.
<b>Professional Grade HEPA 13 Exhaust Filter</b>	Ensures that the dirt and dust captured is contained inside the vacuum cleaner, while releasing 99.95% pure air back into your environment.
<b>32mm system</b>	Accommodate a wide range of 32mm accessories.

<b>Patented Easy Adjustable Harness</b>	Hiking quality designed and supported with fully adjustable shoulder straps and 3 level height adjustment, the perfect fit for every user.
<b>3 Stage Height Adjust Ergonomic back frame</b>	provides a comfortable fit that sits away from the users back and carries even weight distribution causing less stress on the user. Suits small, medium, or tall frames.
<b>Patented Active Air Ventilation System (AAVA)</b>	Innovative patented design combined with airflow cool mesh technology removes hot air away from your back for enhanced comfort. The breathable harness mesh allows air to flow through, removing moisture and enhancing comfort for the user.
<b>Comfort Support System</b>	Vibration free harness with cushioning support inserts to ensure weight is correctly centered on your hips.
<b>Convenient Tool Belt Eyelets</b>	The handy belt eyelets on this utility belt allow the user to hang all accessories for easy access during operation. A hook for the power cord makes cleaning even easier.
<b>Dual Speed performance</b>	ECO Mode for quiet cleaning and TURBO Mode for heavy duty cleaning & blowing.

**Patented And Design Registered.**

# 1. BEFORE YOU BEGIN

Before you start using your new backpack you should read this instruction booklet carefully and make sure that you have understood its contents. If not, please contact the store where you purchased your backpack or call customer service 131 929.

## Precautionary measures:

In the event that your backpack should become blocked, please switch the backpack off and remove the plug from the mains power point before you attempt to remove the blockage.



1. **Do not** operate the vacuum cleaner too close to heaters, radiators, cigarette butts etc.



2. Before you insert the plug into the mains power supply, make sure your hand is dry.



3. Before you start using the backpack, please remove large or sharp objects from the floor in order to prevent the paper filter being damaged.



4. When you remove the plug from the mains power supply, please do this at the plug itself and not by the electrical cable.



5. **Do not** use backpack to pick up water or liquids.

**This backpack is equipped with a cable restraint, cord and plug.**

**In the event that either of these parts become damaged, it must be repaired by a qualified technician.**

## 2. WARNING

**IMPORTANT! Always switch Off the backpack and remove the plug from the electricity power supply before cleaning your appliance, when not in use or attempting any maintenance task. The backpack must only be connected to an AC power supply at the voltage shown on the rating label. This backpack should only be used for its intended purpose as described in this instruction manual. Never operate the backpack without filters.**

### **Safety precautions and warning:**

When using your backpack, basic precautions should always be observed, including the followings;

1. This appliance is not intended for use by persons (including children) with reduced physical, sensory or mental capabilities or lack of experience and knowledge, unless they have been given supervision or instruction concerning use of the appliance by a person responsible for their safety.
2. Children should be supervised to ensure that they do not play with the appliance.
3. To prevent electrical shock, do not immerse the appliance, power cord or power plug into water or other liquids.
4. To prevent electrical shock, do not use the vacuum cleaner outdoors or on wet surfaces.
5. Always check the power cord before use, the power cord and the plug should be in a good condition and must not be damaged. If the power supply cord is damaged or defective, it must be replaced by the manufacturer, its service agent or similarly qualified persons in order to avoid a hazard.
6. Do not unplug by pulling on the power cord. To unplug, grasp the plug not the power cord. Use only Australian and New Zealand electrical safety approved extension cords.
7. Do not pull or carry the appliance by the power cable, use the power cable as a handle or pull the power cable around shaft edges or corners. Avoid running the appliance over the power cable.
8. Ensure the appliance is switched off before unplugging.
9. Do not handle or operate the appliance with wet hands and follow electrical safety precautions at all times.
10. Extreme caution should be exercised when using the appliance on stairs.
11. Do not attempt to change the attachments while the appliance is plugged into the mains power supply. Switch off and remove plug from the mains power supply. Use only manufacturer's recommended accessories.
12. Do not operate the vacuum cleaner too close to the heaters, radiators and other hot surfaces.
13. Do not use the appliance to pick up flammable items or combustible liquids (i.e. petrol, hot ashes cigarettes, matches, explosive materials or anything burning) or use in areas where such substances and items may be present.

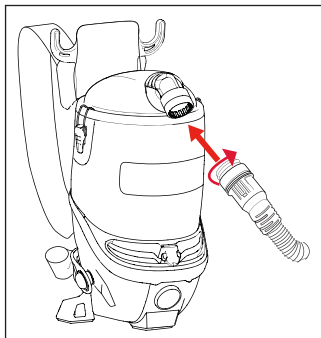
## 2. WARNING (CONTINUED)

14. Do not use the appliance to pick up toxic materials (i.e. chlorine bleach, ammonia).
15. Ensure the appliance is disconnected from the mains power supply before connecting the hose to the unit.
16. Do not operate or use the appliance without the dust bag and/or filters in place.
17. Before vacuuming, remove any large or sharp objects from the floor or cleaning surface in order to prevent damage to the filter.
18. If the air inlet, floor head or the 2-piece rod is blocked, switch off the cleaner straight away and remove from the mains power. First clear the blocked object before attempting to start the cleaner vacuum again.
19. Do not leave the appliance unattended when it is connected to a mains power supply.
20. Before carrying out any maintenance, service or cleaning the filters, always switch off the vacuum cleaner and disconnect the plug from power supply.
21. Keep ends of the hose, 2-piece rod and other openings away from your face and body.
22. Do not use the vacuum cleaner if it is damaged or breaks down. Check the electrical regularly for defects. If connection cables, electrical hoses, electrical contacts and electric tubes are damaged, have them replaced immediately.
23. Never clean the vacuum cleaner or any of the electrical parts, especially the electrical connections with water or liquid cleaners.
24. Never attempt to make any modifications electrically to the vacuum cleaner.
25. Always store the appliance indoors in a cool and dry place.
26. Do not pick up water, dry use only.
27. Damage caused by improper use or by not observing the instructions in this manual will void warranty.
28. This appliance must be grounded. If it should malfunction or breakdown, grounding provides a path of least resistance for the electric current to flow, this will reduce and prevent the risk of electric shock. This appliance is equipped with a cord having an equipment-grounding conductor and grounding plug. The plug must be inserted into an appropriate outlet that is properly installed and grounded in accordance with all local codes and ordinances.



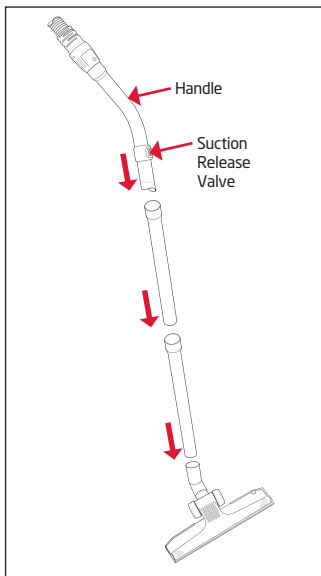
## 3. ASSEMBLY

Always switch Off your backpack and remove the plug from the mains power point before cleaning your appliance, assembling, when not in use or attempting any maintenance task.



### Connecting the hose

1. To fit the hose, insert into the hose inlet at the top of the backpack. Turn the hose end clockwise until it locks into place.
2. To remove the hose, twist the hose end counter clockwise until it loosens.



### Fitting the 2-piece rod and floor tool

1. Connect the 2-piece rod together. To fit the rod to the handle, gently insert the end of the handle into the top of the rod.
2. To fit the floor tool to the rod, gently insert the rod into the top of the floor tool as shown .

## 3. ASSEMBLY (CONTINUED)



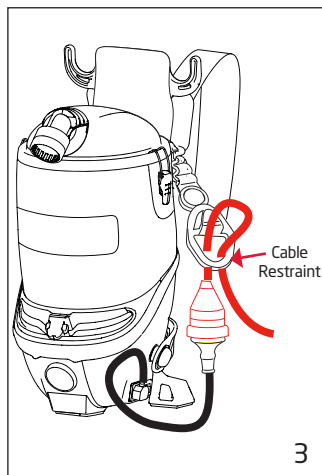
The Patented Gulper Advance floor tool is ideal for cleaning on carpets and hard floors.

### Accessory

**Crevice Tool** - ideal for cleaning in tight spaces

### Cable Restraint

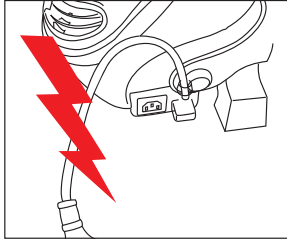
**IMPORTANT - Ensure extension cord is fitted to the restraint correctly**



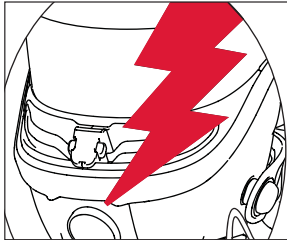
1. Connect extension cord to the Cable Restraint on the backpack. (Make a loop at 40cm on the extension cord)
2. Feed the loop up through Cable Restraint opening.
3. Place extension cord over the top of the Cable Restraint hook. Pull down on the extension cord to lock the cord onto the hook.
4. Pull down on the extension cord firmly to ensure the cord does not slip.

## 4. INSTRUCTIONS FOR USE

### IMPORTANT



Do not use your backpack if the power cord is damaged, or there are exposed internal wires.



Do not use your backpack if the motor housing is damaged.

### Fitting Your Backpack

Your backpack comes with straps fastened for ease of packing. Before fitting the backpack onto your back, first loosen the various harness straps.



1. Adjust harness height to your body height by squeezing & sliding the Height Adjust Plate (up or down) to your appropriate height. (Tall, Medium or Small)

## 4. INSTRUCTIONS FOR USE (CONTINUED)



2. Place your arms through the harness. Buckle the hip belt ensuring the backpack is resting on your hip bone and tighten by pulling both the hip belt side straps.



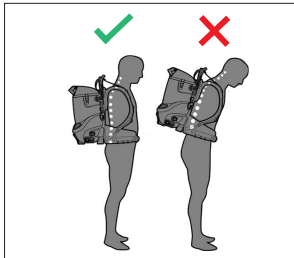
3. Tighten the shoulder straps by pulling down on the end of the two straps as pictured.



4. Pull down on the two load lifter straps.



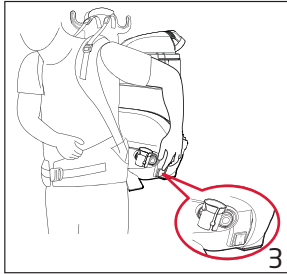
5. Buckle the sternum strap across your chest.



### IMPORTANT

The unit is ergonomically correct when the weight is distributed over the waist and not on the shoulders.

## Operating Your Backpack



### IMPORTANT

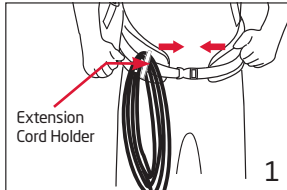
**For everyday use, always operate your backpack in the Turbo (high) mode. This improves the cyclonic action in the bag chamber.**

1. Your backpack needs to be used with an extension cord. Fit the extension cord to the Cable Restraint correctly as per the cable restraint instructions (please refer page 10 Cable Restraint). Connect the extension cord to the mains power supply.
2. Fit the unit onto your back (Please refer page 12 Fitting Instructions).
3. To switch on the backpack, reach back with your left hand to the lower side of the unit and press the On/Off switch. (Press up for Eco (low). Press down for Turbo (high). Press middle for Off.
4. The Powerhead outlet is located next to the power inlet socket. This outlet can be used to connect a powerhead.
5. There are 2 power modes, Eco and Turbo. "Eco" for upholstery cleaning. "Turbo" for everyday use.

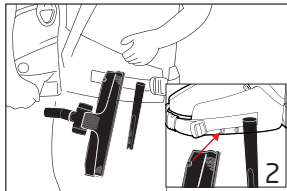
## 4. INSTRUCTIONS FOR USE (CONTINUED)

### Using Cord Holder Strap and Accessories Hook

In between jobs, the extension cord and accessories can be temporary stored on the waist strap.

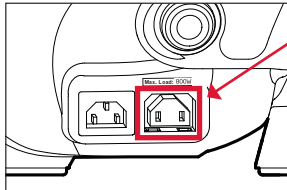


1. First buckle up the hip belt. The extension cord can be secured on the hip belt (right side), in the strap with the buckle clip.



2. For convenience, secure each of the Gulper Advance Floor Tool and the Crevice Tool into a fabric eyelet hook provided on the belt.

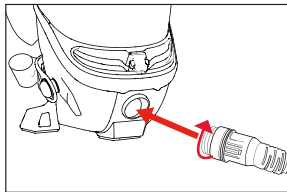
### Using the Powerhead\*



The Powerhead Outlet is designed for use with an electrically approved motorised powerhead. The maximum wattage of the powerhead must **not** exceed 800 watts.

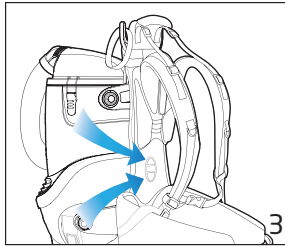
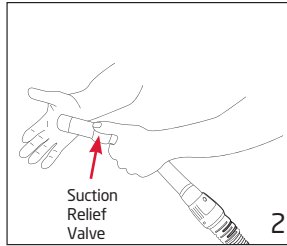
\* Powerhead is not included.

### Using Blower Port



Insert the hose into the blower port. Turn the hose end clockwise until it locks into place.

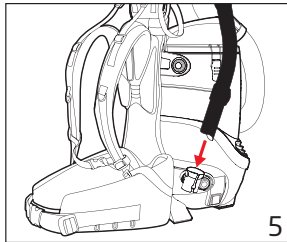
## Using the Active Air Relief System



The Active Air Relief System removes hot air away from your back for enhanced comfort while using your backpack.

1. Press the On/Off switch down to Turbo Mode.
2. Close off the Suction Relief Valve.
3. Block nozzle with your hand and this will open the Active Air Relief System to draw fresh cool air in and around your lower back.

## Taking Off Your Backpack



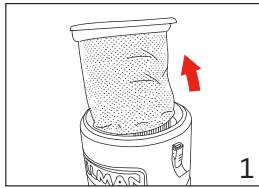
1. To switch the backpack Off, press the On/Off switch to the middle.
2. Unclip the waist strap and chest strap.
3. Loosen the shoulder straps slightly. Slide the pad off of one shoulder and then off the other shoulder - taking off the carry handle on the top of the backpack.
4. Turn off at the power outlet and remove the plug from the mains power supply.
5. Store the hose handle end in the onboard tool holder.
6. Loop the extension cord together and secure it onto the cord hook, securing it firmly by the Velcro strap attached to the cord hook.

## 5. MAINTENANCE

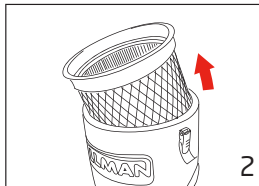
### WARNING!

Before any Maintenance and Cleaning - ensure your backpack is turned off and the extension cord is disconnected from the mains power supply.

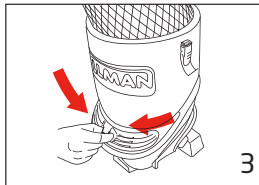
Always operate your backpack with the Patented Vortex HEPA Filter Chamber and the cloth filter bag correctly installed. This will prevent damage to your backpack and help maximize cleaning performance.



1. Remove the clear lid and lift out the cloth dust bag to empty.

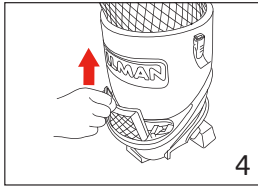


2. Next, remove the Patented Filter drum & tap gently to clean.



3. Squeeze the two HEPA filter grill tabs & remove the grill.





4. Pull up the exhaust HEPA filter, and tap the HEPA filter to clean.

For maximum performance replace the cloth filter bag every 3 months.

We recommend the both the HEPA filter and the Patented Vortex HEPA Filter Chamber are replaced at time of service - 6 monthly.

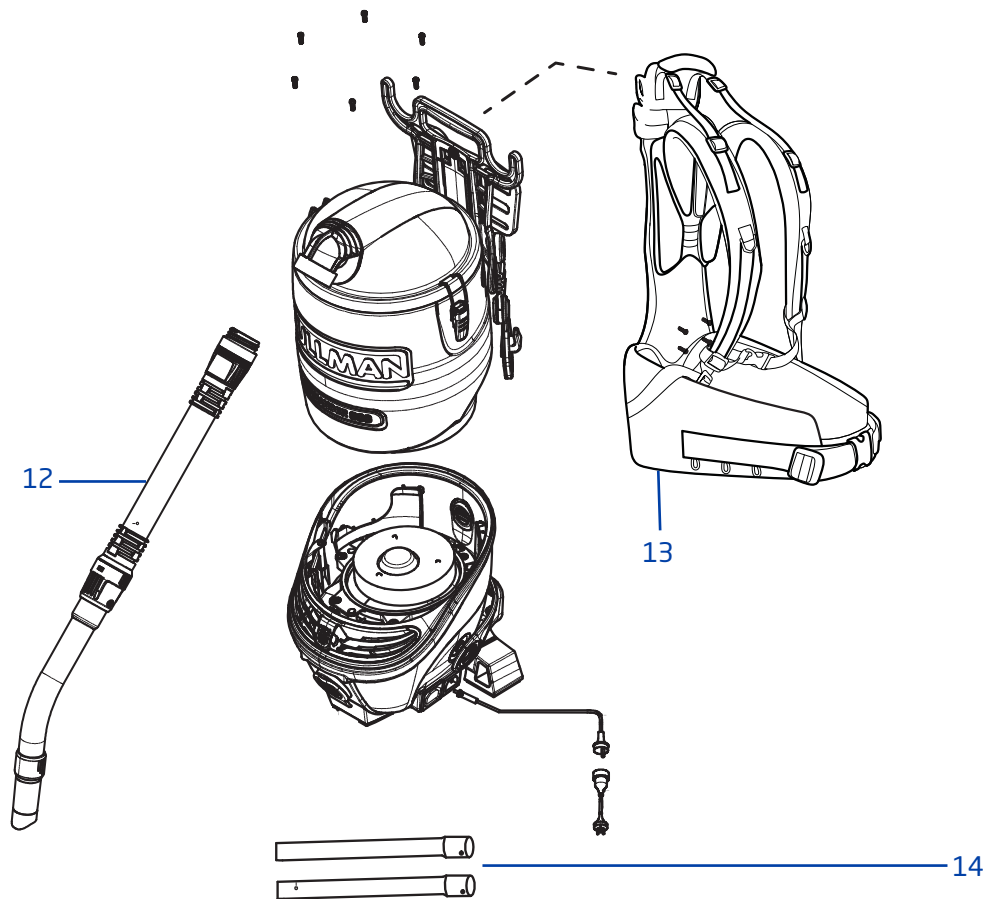
## 6. TROUBLESHOOTING

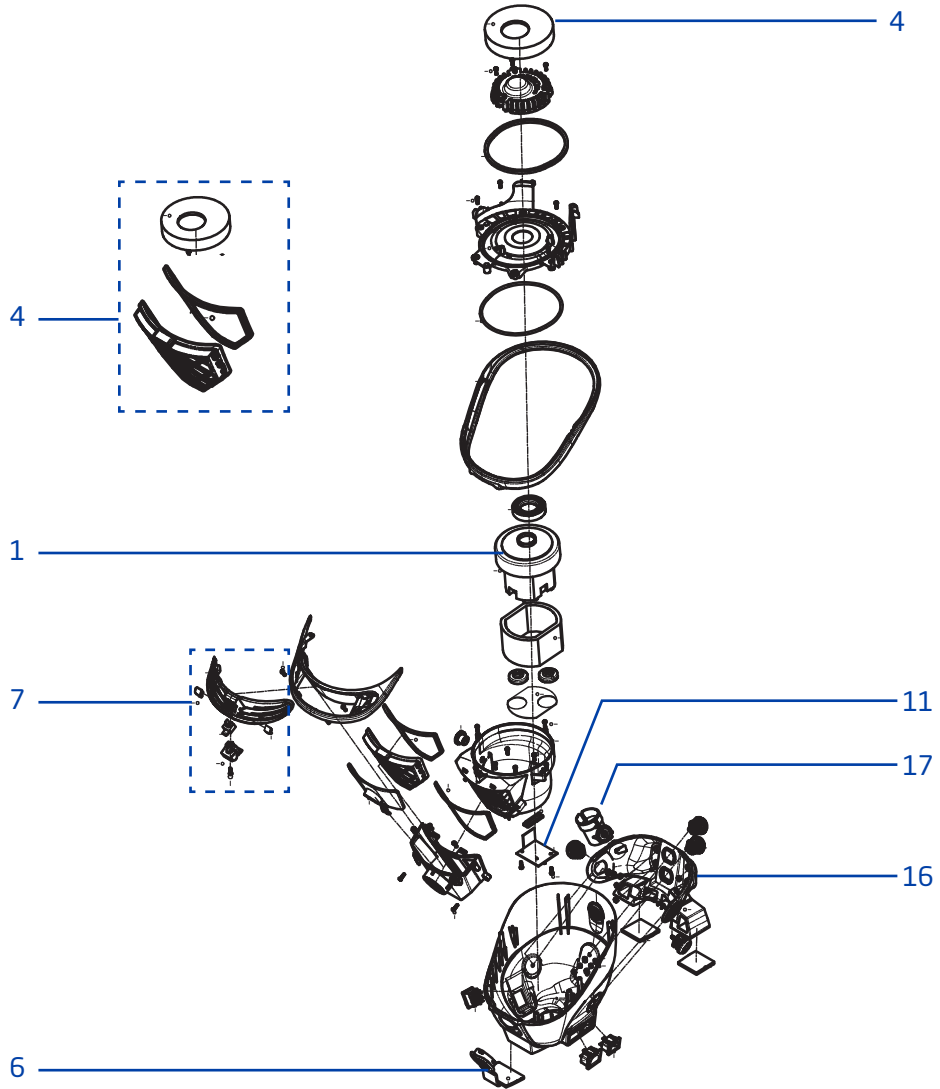
### Problems and solution

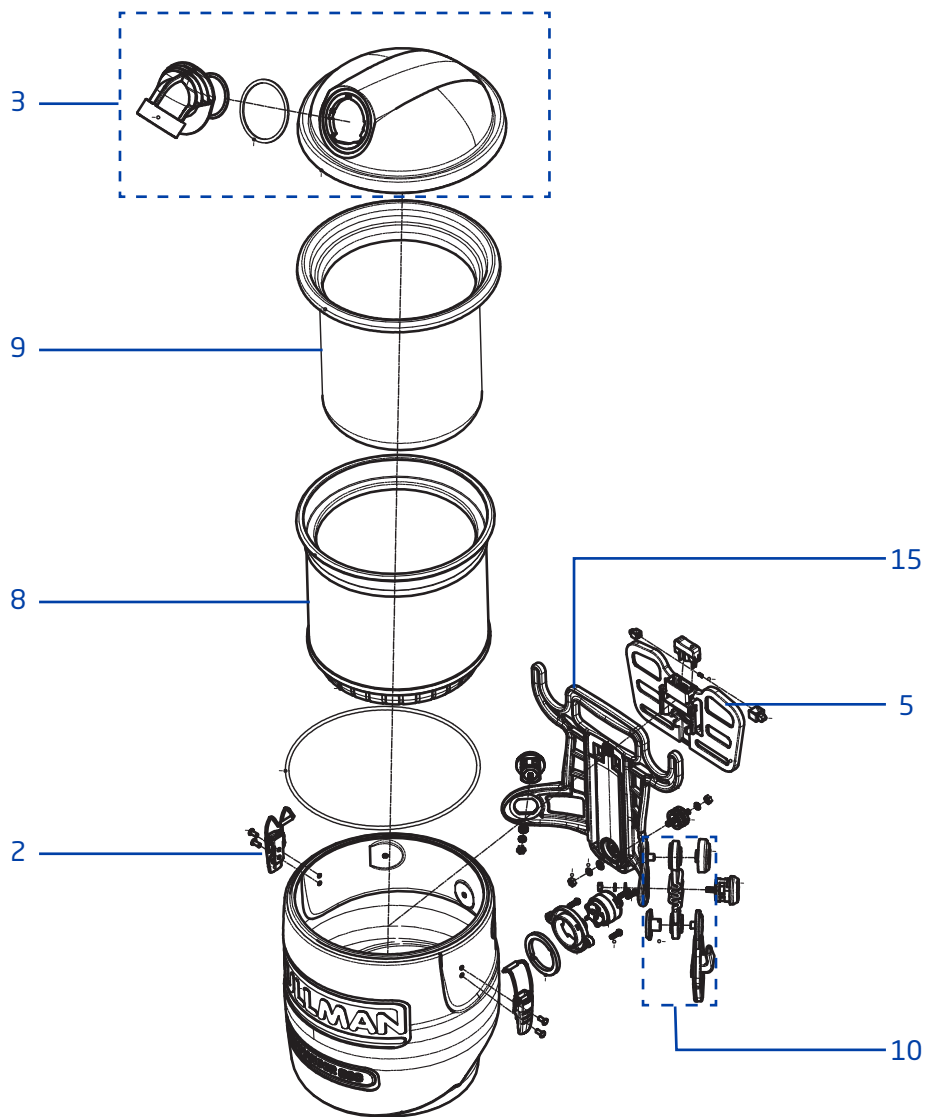
Please contact Godfreys Commercial Customer Support on 131 929 to find your local spare parts provider.

Fault	Treatment
The backpack vacuum cleaner will not turn "On".	Check that the extension cord is inserted securely; remove the power plug and then reinsert into the mains power supply. Check that the On/Off switch is in the 'ON' position.
The backpack vacuum performance is deteriorating.	Check the backpack to ensure there are no blockages. Please clear any blockages that may be found. ( <b>Important:</b> always first remove the plug from the mains power point). Check the cloth filter bag (inlet and exhaust) to see if it needs to be cleaned or replaced.
The cleaner makes an abnormal sound when switched on.	Check the backpack to ensure there are no blockages. Please clear any blockages that may be found. ( <b>Important:</b> always first remove the plug from the mains power point).
The backpack vacuum has no suction, it turns off after a few minutes and not able to turn back on.	Check for a blockage in the hose, rod or floor tool that may be restricting air flow. If found, remove the blockage and allow approximately 30-60 minutes for the motor to cool down before operating the machine again. ( <b>Important:</b> always first remove the plug from the mains power point).

## 7. EXPLODED VIEW







<b>Number</b>	<b>Part Description</b>	<b>Part Number</b>
1	Motor	34400222
2	Latch, dust bin lid	33600187
3	Lid assembly complete	33155189
4	Filter set, exhaust, motor inlet	32201322
5	Bracket Height Adjust	33788030
6	Cap, blower	31155135
7	Exhaust Grille	33155193
8	Vortex HEPA Filter Chamber	32201325
9	Cloth Filter Bag	32440477
10	Cable Restraint	33155198
11	Main PCB board	33201331
12	Hose 32mm Pullman PV900	31220941
13	Strap & Harness Assembly complete	33788029
14	Rod 32mm Pullman PV900	31300840
15	Upper bracket	31220846
16	Lower bracket	33788035
17	BEP 32mm Pullman PV900	33157219
Not shown	Paper bag 5 pcs	32440416
Not shown	Clean Up Synthetic Bag 10pk CU900	32440533

## NOTES

---

---

---

---

---

---

---

---

---

---

---

# Conditions of warranty



\* Your Pullman Advance Commander 900 Backpack, in the case of domestic use, has a two\* years warranty against product defects and failures when the product is used in accordance with the terms and conditions of this warranty statement.

This warranty is provided by Future Innovation Holdings Pty Ltd Trading as Godfreys Commercial ABN 98 677 632 021. This warranty commences from the original date of purchase and is not transferable. You are required to retain your original proof of purchase for any claims under this warranty. This warranty is valid only in the country where the cleaner is purchased.

Your Pullman Advance Commander 900 Backpack must be operated in accordance with these instructions and used only for domestic household cleaning to remove dry dirt and dust from household carpets, flooring and fabrics. Your Pullman Advance Commander 900 Backpack is not fit to be used as an industrial cleaner, and is not designed for the collection of vitreous building material including particle board, construction products and similar products such as wood/ fibres, cement, fillers, fibre glass etc or excessive or frequent sand. The infrequent pick-up of these materials may be harmful to your cleaner and will void this warranty.

Accessories and consumables including dust bags and filters, unless defective in manufacture, are not subject to this warranty. In order to prolong the life of accessories and consumables, regular care and maintenance is recommended.

Refer to the instruction manual for further regarding the use and care of your Pullman Advance Commander 900 Backpack, as misuse or failure to follow the instructions voids this warranty.

In the event of service or advice being needed, or if you would like to make a claim under this warranty, please immediately stop using the Pullman Advance Commander 900 Backpack and contact Godfreys Commercial, 2 Drake Boulevard Altona, VIC 3018, or on 131 929, Monday-Friday 9am-5pm AEST or [commercialsupport@godfreys.com.au](mailto:commercialsupport@godfreys.com.au).

The decision to repair or replace the cleaner is at the discretion of Godfreys Commercial depending on the circumstances and requirements of any applicable law. If Godfreys Commercial decide to repair or replace your Pullman Advance Commander 900 Backpack, it will do so at its own cost. Any transportation costs involved in a claim under this warranty shall be borne by the claimant.

Godfreys Commercial is unable to accept responsibility under this warranty for any repair work not carried out by an authorised Service Agent, or any defect arising from or in connection with the use of non-genuine parts. If any part is no longer available or manufactured, Godfreys Commercial will replace it with a genuine functional replacement part. This warranty does not apply to the cost of replacing any parts of the Pullman Advance Commander 900 Backpack due to normal wear and tear, alterations, improper installation, physical abuse, misuse or accidental damage.

If proof of purchase cannot be provided at the time of a warranty claim or service, any work carried out on the Pullman Advance Commander 900 Backpack will be at claimant's cost.

The repair of the Pullman Advance Commander 900 Backpack under this warranty does not extend the original period of warranty. If your Pullman Advance Commander 900 Backpack is replaced under this warranty, the replacement will be covered by this warranty for the remainder of the original warranty period. However, you may still have statutory rights after this time.

The benefits conferred by this warranty are in addition to all other rights and remedies in respect of the product as outlined under the Competition and Consumer Act 2010 (Cth) and other State and Territory laws.

Our goods come with guarantees that cannot be excluded under the Australian Consumer Law. You are entitled to a replacement or refund for a major failure and compensation for any other reasonably foreseeable loss or damage. You are also entitled to have the goods repaired or replaced if the goods fail to be of acceptable quality and the failure does not amount to a major failure.

\*Two year warranty on parts and labour excluding the battery which has a one year warranty.

